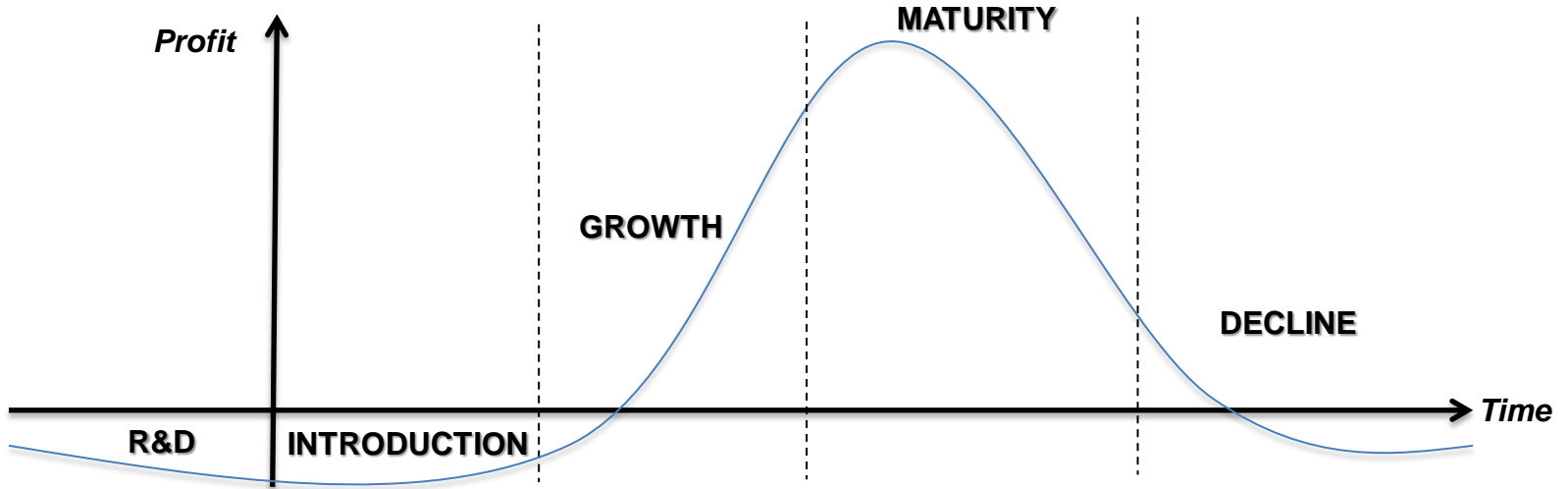


A performing **core business**,
associated with
value-added services



for a **one-stop shop solution**

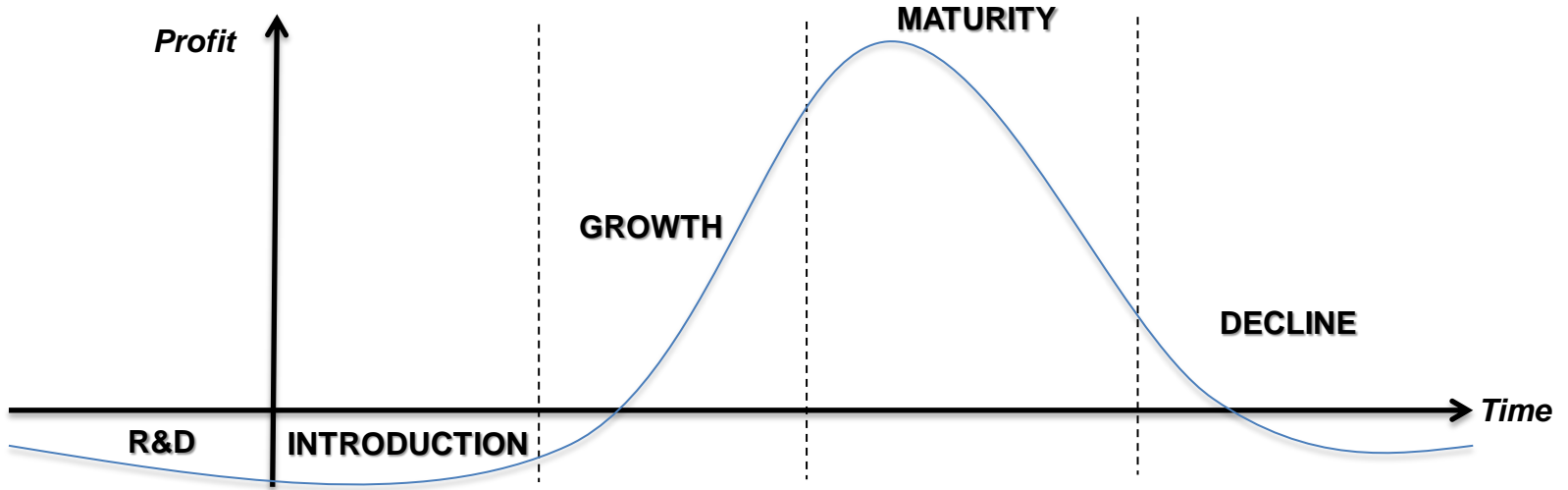
YOUR PRODUCT
LIFECYCLE



OUR INTEGRATED
MANUFACTURING OFFER

Design & Prototype	NPI	Ramp up	Mass production	Legacy
PCBA Manufacturing (SMT, PTH, wave soldering...)				
Box Build				
Surface treatment or protection (conformal coating, potting, washing...)				
Special processes (plastic injection, mechatronics, cable & harness...)				
Testing (SPI, AOI, X-ray, Flying probe, ICT, Functional Test, Burn in...)				
Pre & Post production support (Manual rework, Touch up, Repair, Warranty service...)				

**YOUR PRODUCT
LIFECYCLE**



**OUR VALUE-
ADDED SERVICES**

**Technology &
design**

Co- specifications,
Co-design,
Early Dfx,
**Reverse
engineering,**
Preliminary
pFMEAs

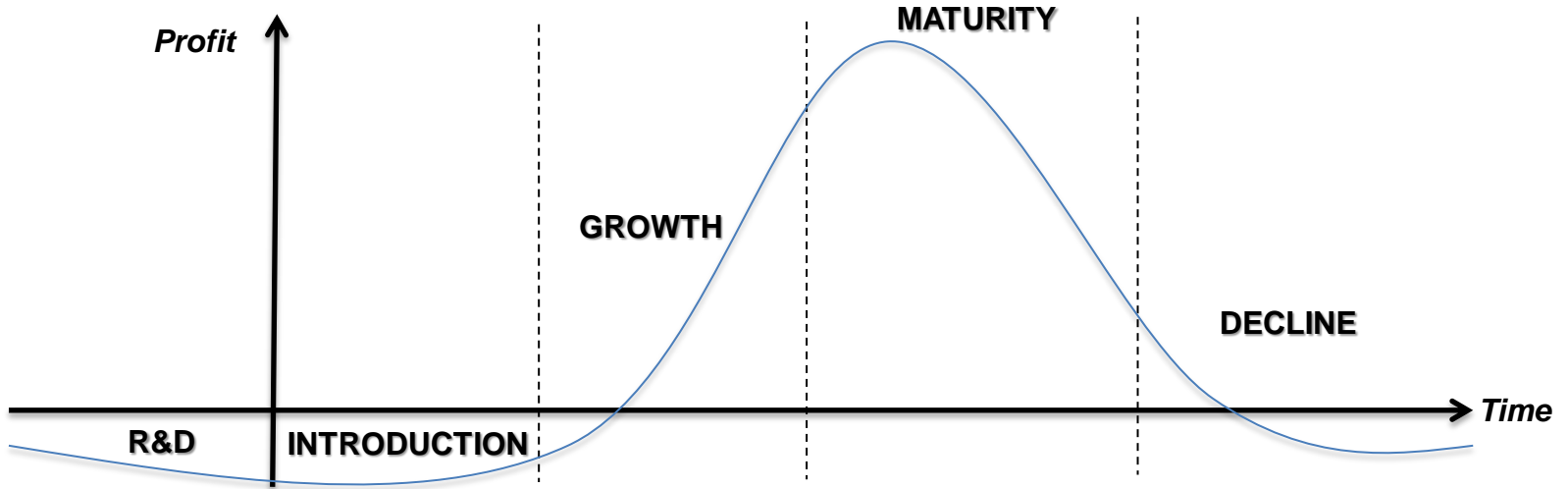
Industrialization,
**DFT and
DFM,**
BOM
components
analysis (DFP),
Initial pFMEAs

**Yield analysis
from test
reports,**
Final test
assessment,
Update pFMEAs,
Dfx

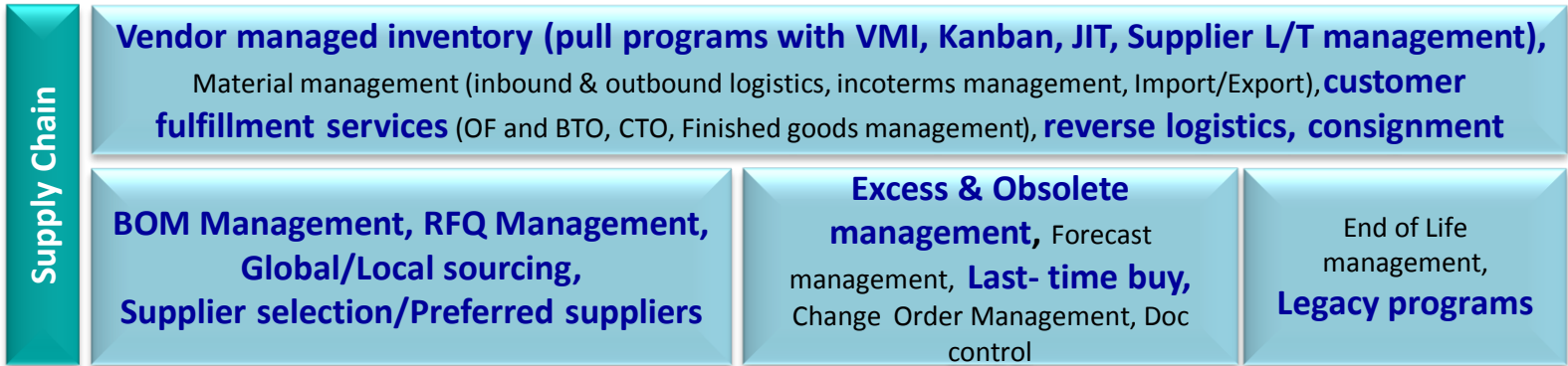
Equipment/process
controls,
pFMEA updates with
CARs,
**Product redesign
(obsolete part...),
redesign for cost,
ECO Management**

**New product
design
opportunities**

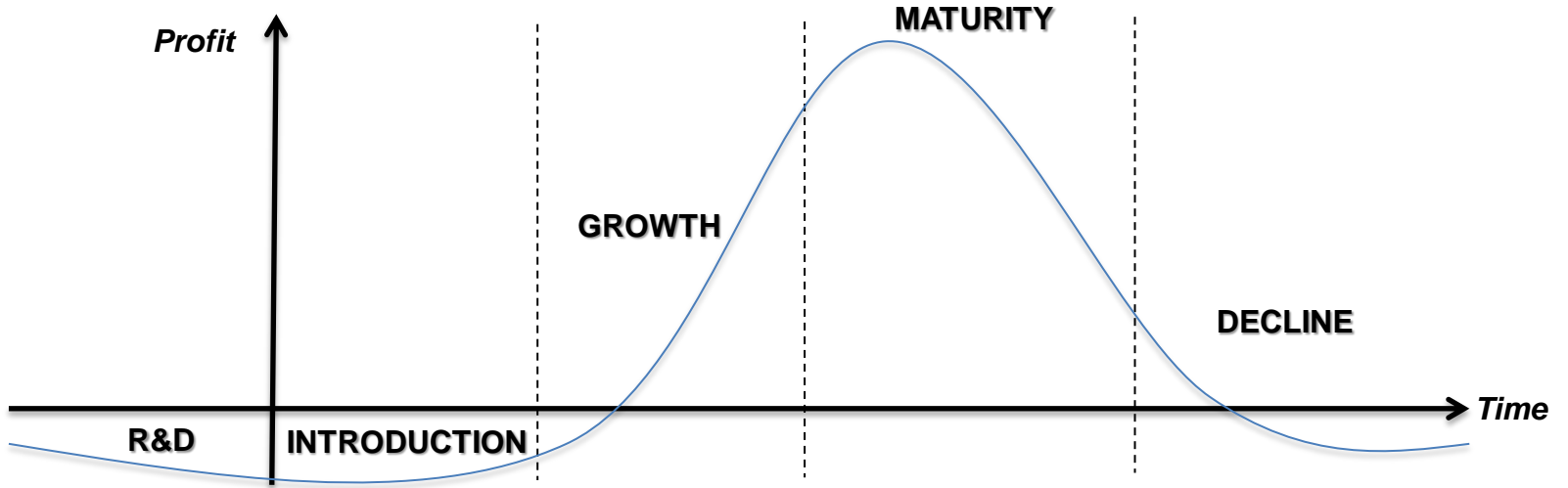
**YOUR PRODUCT
LIFECYCLE**



**OUR VALUE-
ADDED SERVICES**



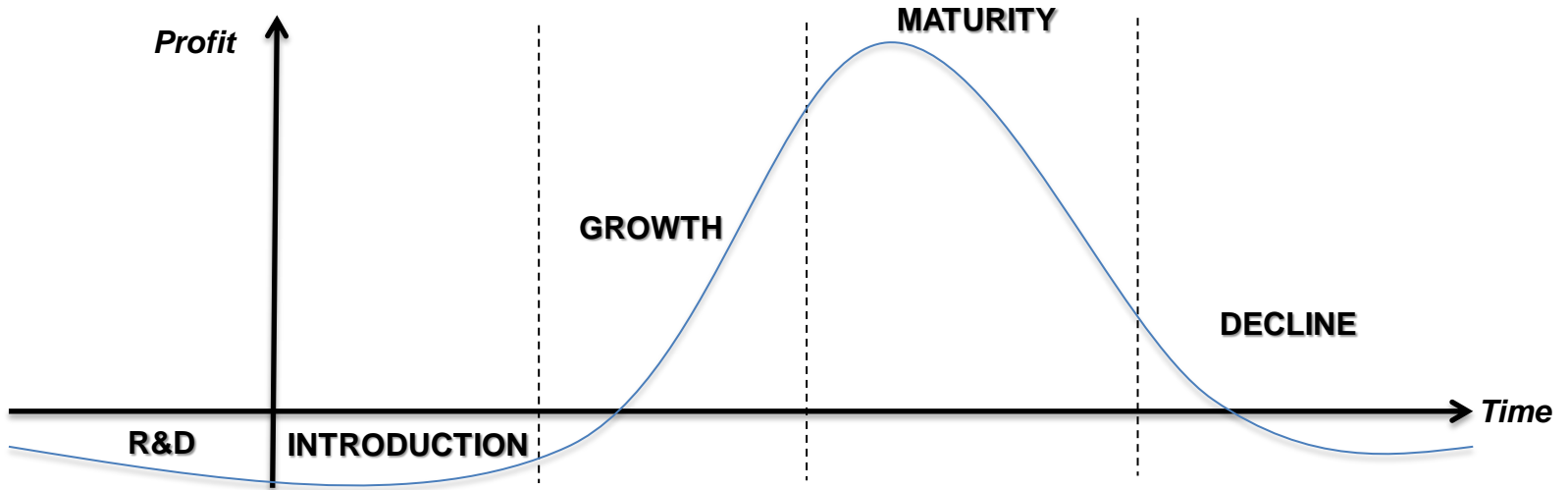
**YOUR PRODUCT
LIFECYCLE**



**OUR VALUE-
ADDED SERVICES**



**YOUR PRODUCT
LIFECYCLE**



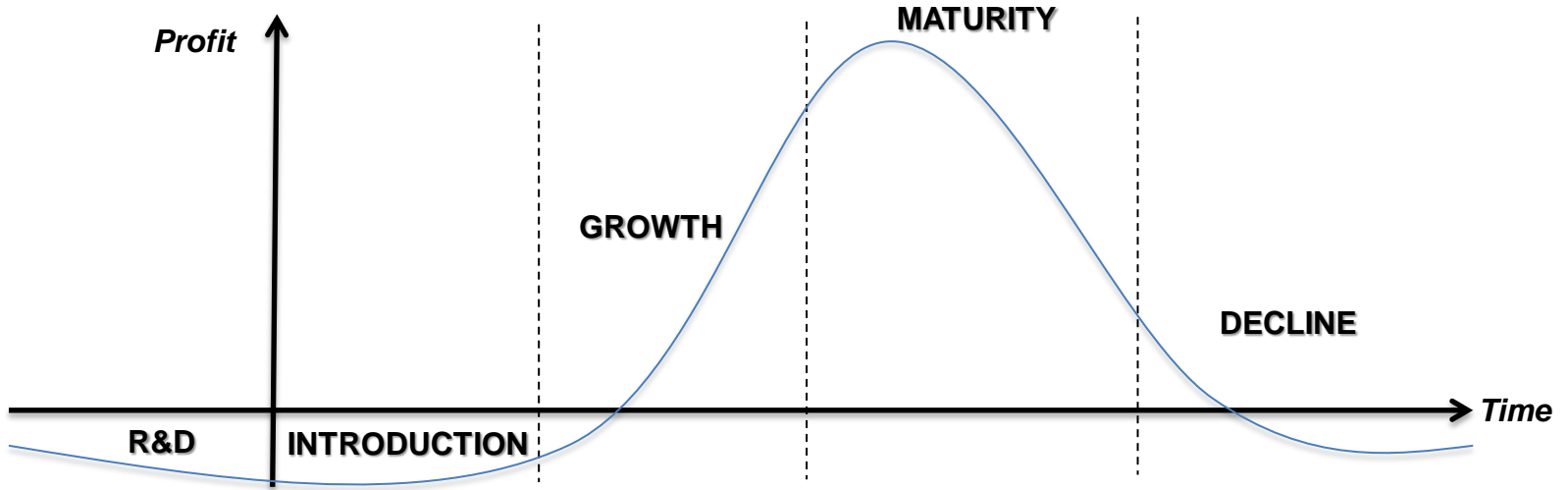
**OUR VALUE-
ADDED SERVICES**

Lean

Work with similar VSM/Flow analysis/Product,
Standards in production, new process layout with ergonomics for best cycle time **to meet customer OTD requirements**

Improvement of equipment use and people activity **eliminating MUDA, using Visual Management, 5S .**
Performance monitored based on San Gen Shugi using QCDM.
Continuous improvements process flow

YOUR PRODUCT
LIFECYCLE



OUR VALUE-
ADDED SERVICES

HR

A high-level of expertise shared worldwide at each level of the value-chain, with **dedicated and motivated local support (CFT...),**
ensuring proximity to properly manage customers projects